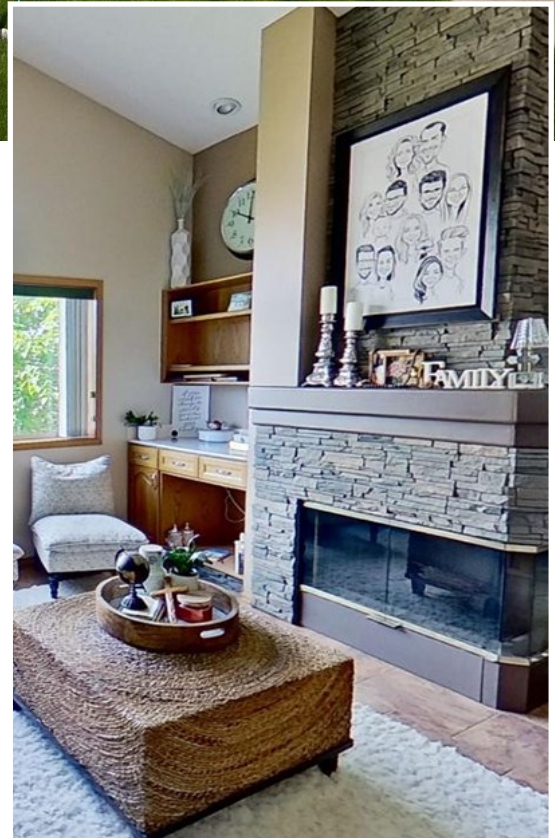


Fine Features of

55, 9718 176 St



Click on text for:

- Colour Brochure

- Floor Plan

- Virtual Tour

- Optimized tour for Cell Phone

- Map of Home



Bruce MacPherson, B.Sc., B.A.

**“Relocation Specialist”
Real Estate Professional**

Bus: (780) 481-9060

View this home at: www.EdmontonHouses.com

E-mail: Bruce@EdmontonHouses.com

*Not intended to solicit properties already listed for sale

ROYAL LEPAGE

Noralta Real Estate



*Prestigious recognition
awarded to the TOP 1%
Royal LePage Real Estate
sales representatives in 2008.*

2008

Welcome to
55, 9718 - 176 Street NW



Village Terra Rosa



BRUCE MACPHERSON, B.Sc., B.A.

“Relocation Specialist”

Real Estate Professional

Bus: 780-481-9060

View this home at: www.EdmontonHouses.com

Email: Bruce@EdmontonHouses.com



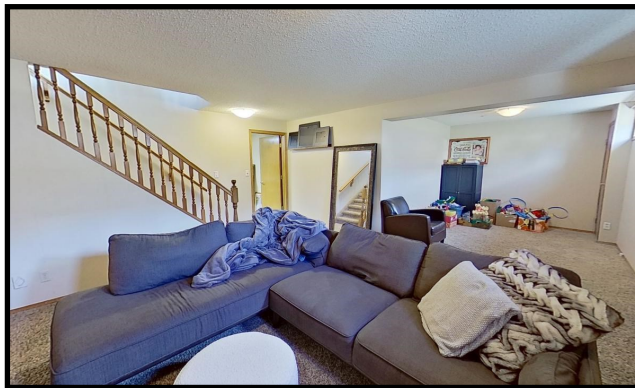
ROYAL LEPAGE
Noralta Real Estate

*Prestigious recognition awarded
to the TOP 1% nationally of
Royal LePage Real Estate sales
representatives in 2008.*

Not intended to solicit properties already listed for sale



Find Your Home on the Web at: www.EdmontonHouses.com



55, 9718 - 176 Street



BRUCE MACPHERSON, B.Sc., B.A.

"Relocation Specialist"

Real Estate Professional

Bus: 780-481-9060

View this home at: www.EdmontonHouses.com

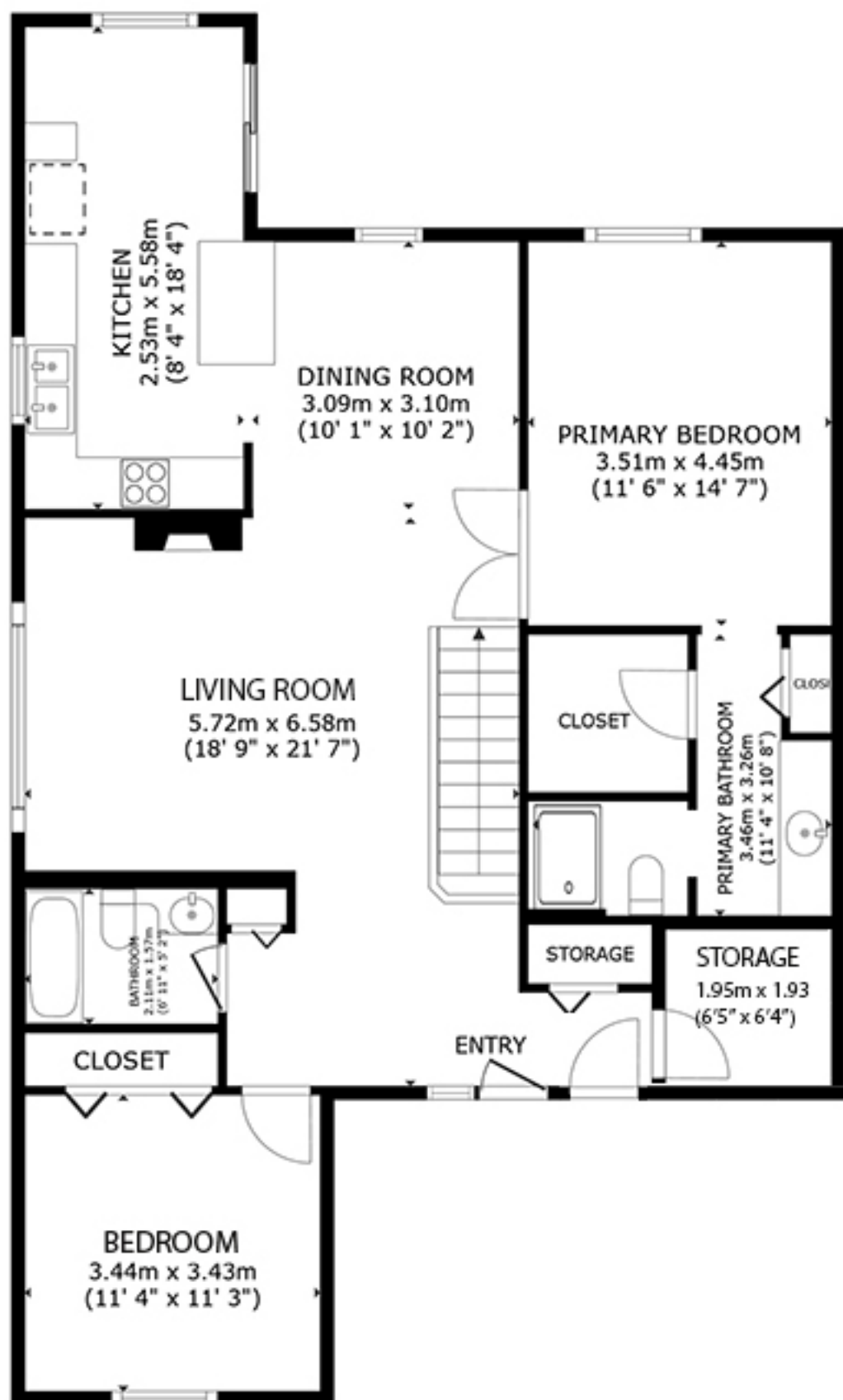
Email: Bruce@EdmontonHouses.com



ROYAL LEPAGE
Noralta Real Estate

Prestigious recognition awarded
to the **TOP 1%** nationally of
Royal LePage Real Estate sales
representatives in 2008.

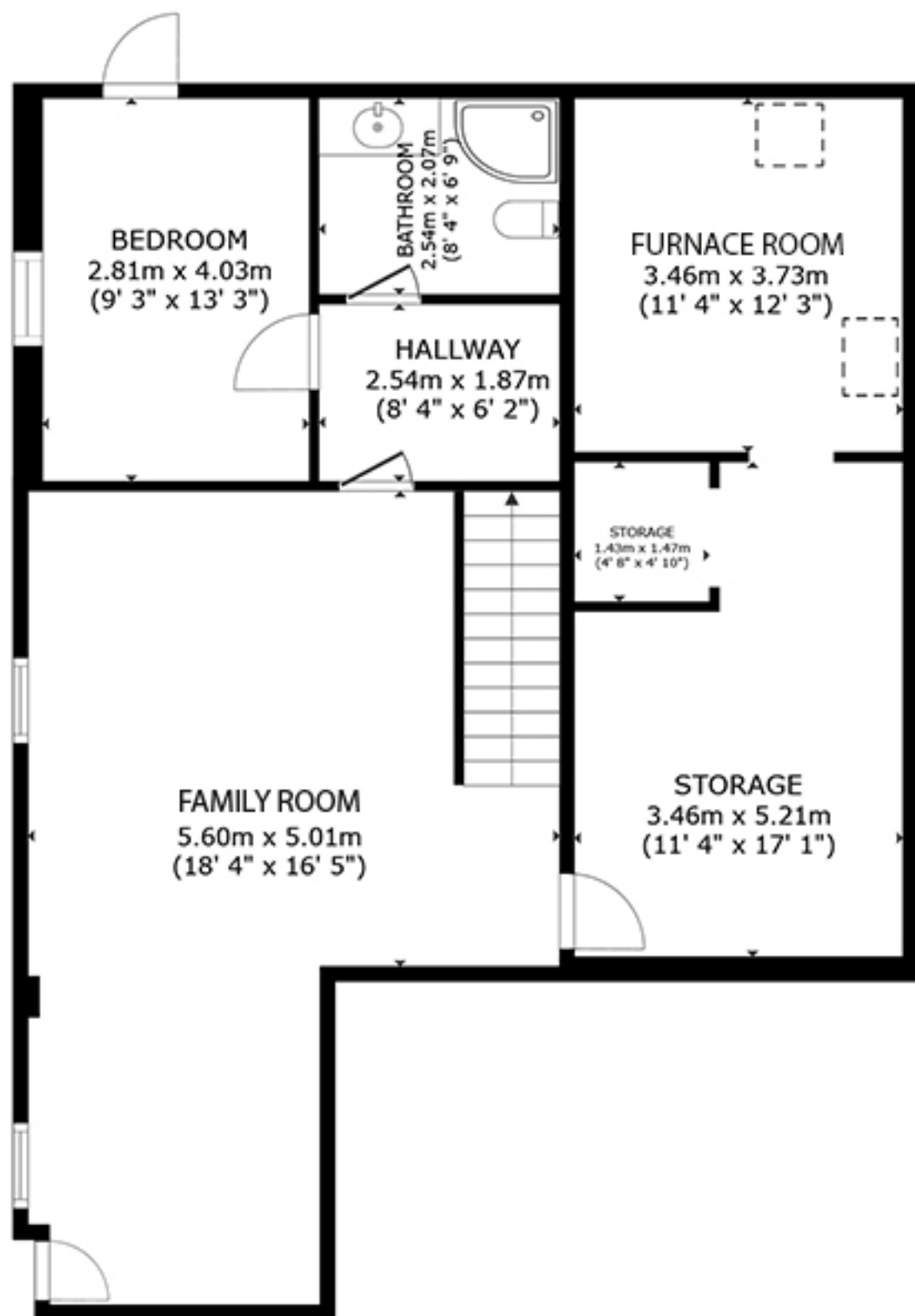
Find Your Home on the Web at: www.EdmontonHouses.com



Main Floor

GROSS INTERNAL AREA
 FLOOR 1 93.9 m² (1,011 sq.ft.) FLOOR 2 109.26 m² (1176 sq.ft.)
 TOTAL : 203.16 m² (2,187 sq.ft.)

SIZES AND DIMENSIONS ARE APPROXIMATE, ACTUAL MAY VARY.



Basement

GROSS INTERNAL AREA
 FLOOR 1 93.9 m² (1,011 sq.ft.) FLOOR 2 109.26 m² (1176 sq. ft.)
 TOTAL : 203.16 m² (2187 sq. ft.)

SIZES AND DIMENSIONS ARE APPROXIMATE, ACTUAL MAY VARY.